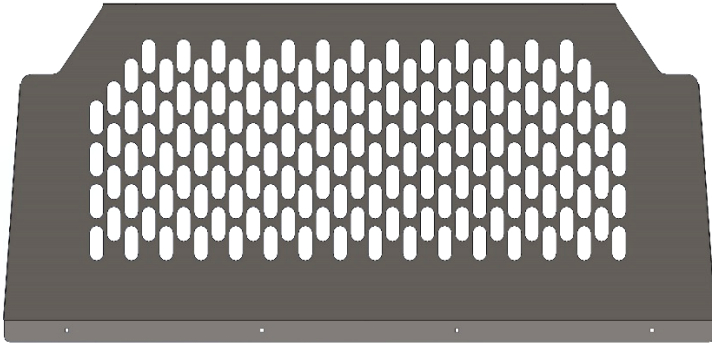
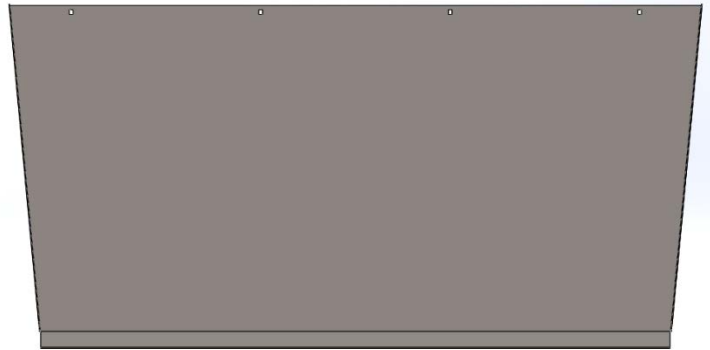


# KARGO MASTER

## 40670 Transit Connect/NV200/City Express/ProMaster City Partition



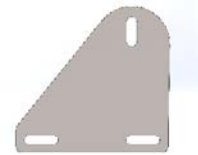
Top Panel (1)



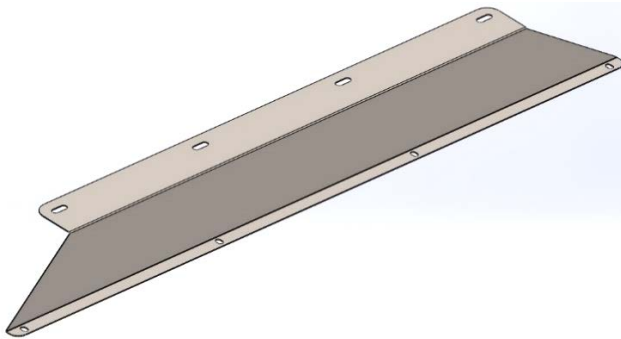
Bottom Panel (1)



Transit Connect (2014) Top Angle (1)



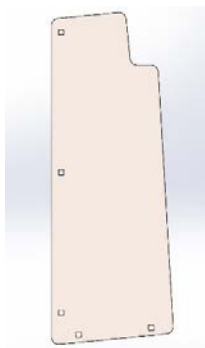
TC Top MNT BRKT (2) TC Bottom MNT PLT (2)



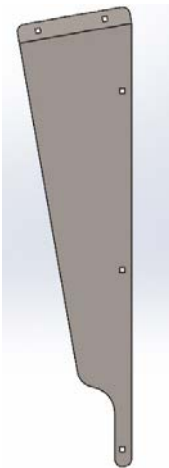
NV200/City Express Top Mount Panel (1)



ProMaster City Top Panel (1)



Upper Wing (2)



Lower Wing (1 Left+ 1Right)



PC Top Pillar Mount (1)






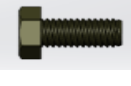




Side Bracket (2)

# 40670 Hardware List




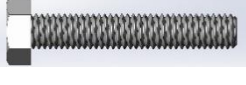


## Tools Needed

7/16" Socket	7/16" End Wrench
1/2" Socket	1/2" End Wrench
10MM Socket	10MM End Wrench
12MM Socket	12MM End Wrench

## Hardware Pack

(a) Qty 18 - 1/4"-20 x1/2" Carriage Bolt	
(b) Qty 50 - 1/4" Flat Washer	
(c) Qty 38 - 1/4" Nylock	
(d) Qty 12 - 1/4"-20x 5/8" Carriage Bolt	
(e) Qty 4 - 1/4"-20 x 7/8" Hex Bolt	
(f) Qty 8 - 3/8"x1" Nylon Spacer	
(g) Qty 4 - 5/16"x3/4" Carriage Bolt	
(h) Qty 4 - 5/16" Nylock nut	
(i) Qty 4 - 5/16" Flat Washer	
(j) Qty 2 - 1/4"-14 x3/4" Truss Head Screw	

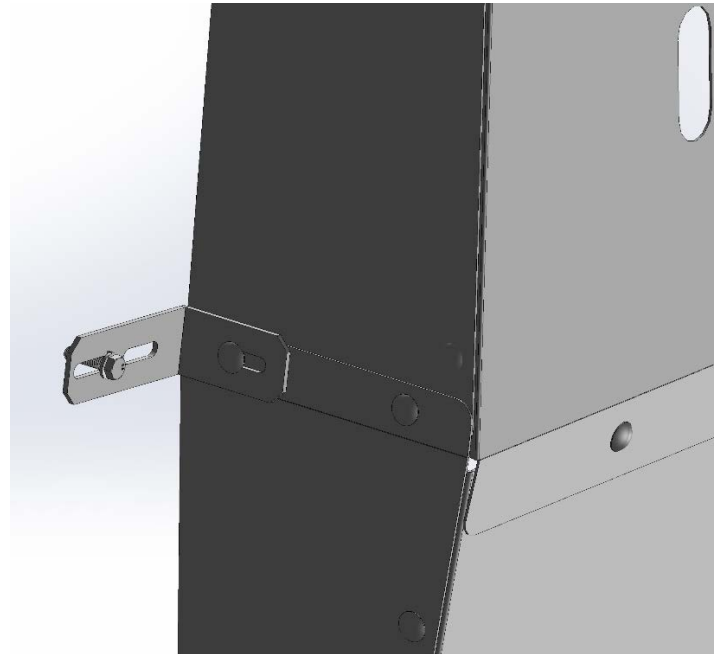
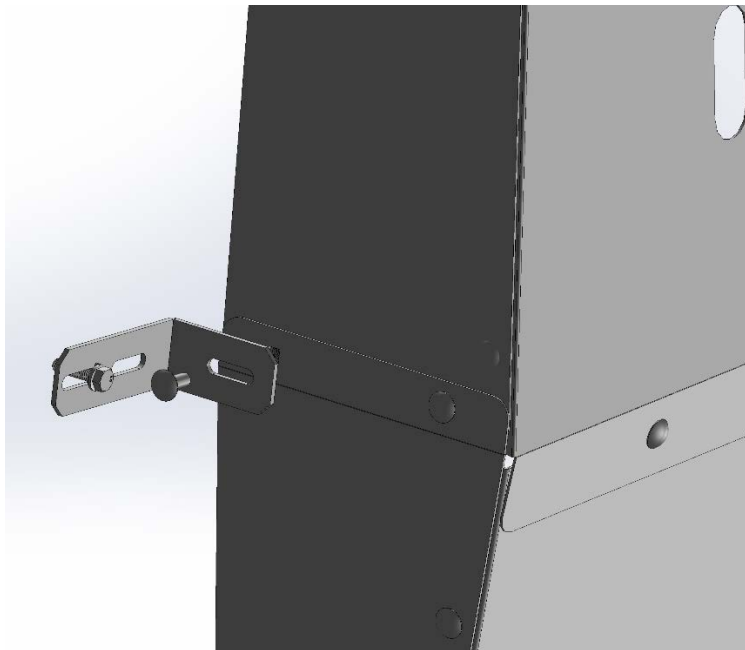
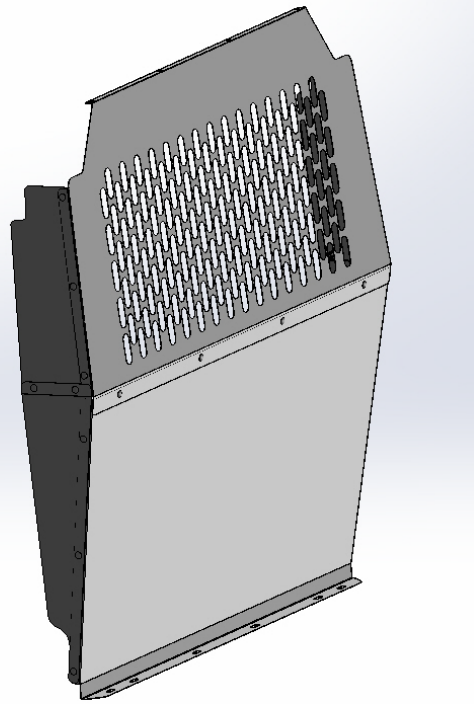
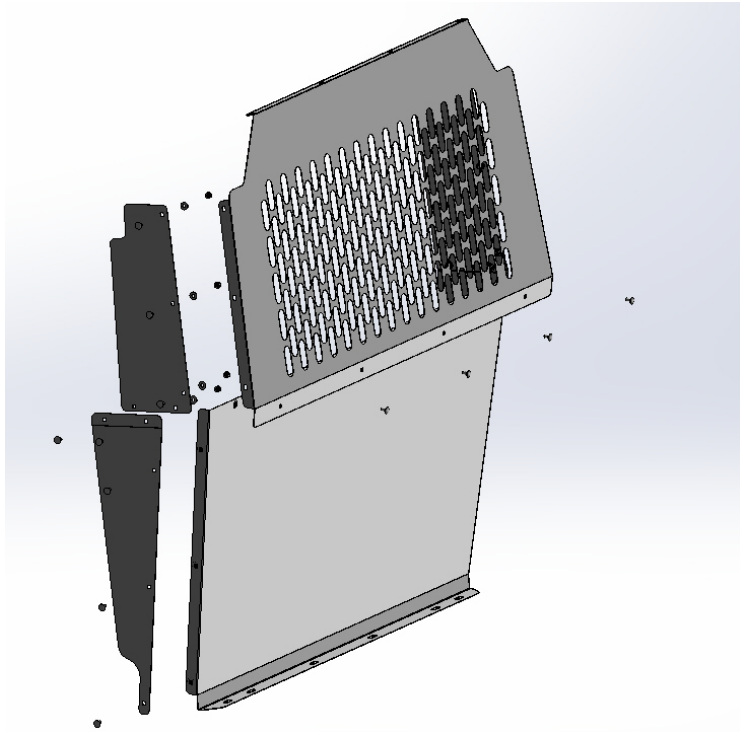
## Hardware Pack Cont'

(k) Qty 4 - 5/16"-18 x 1 1/4" Hex Thread Cutting Bolt	
(l) Qty 4 - 1/4"-20 x1 1/4" Hex Bolt	
(m) Qty 4 - 1/4" Lock Washer	
(n) Qty 4 M8 x 45mm Hex Bolt	
(o) Qty 2 - M6 x 25mm Hex Bolt	
(p) Qty. 2 - M6 x 35mm Hex Bolt	

For TECHNICAL SUPPORT Call: 800-343-7486 Monday - Friday 7:00 A.M. to 4:00 P.M (PST)

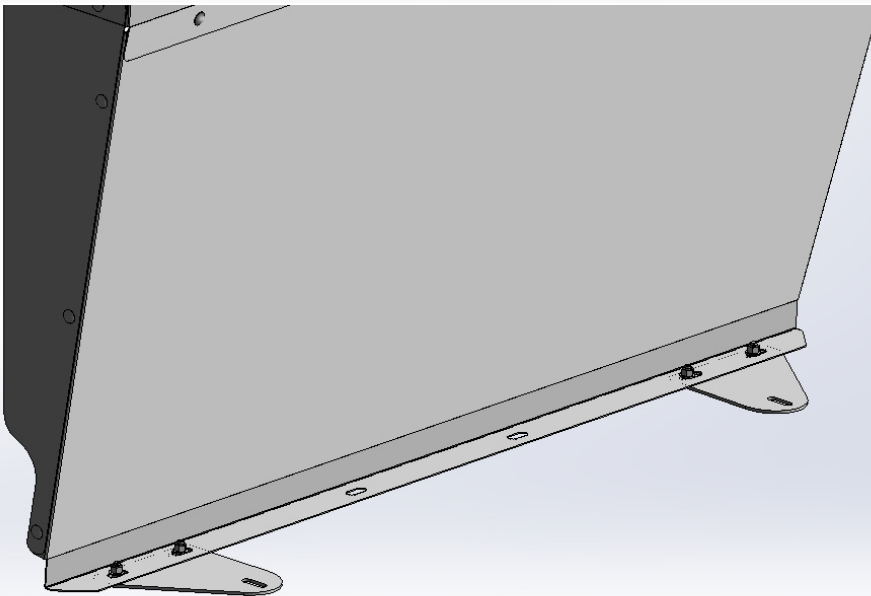
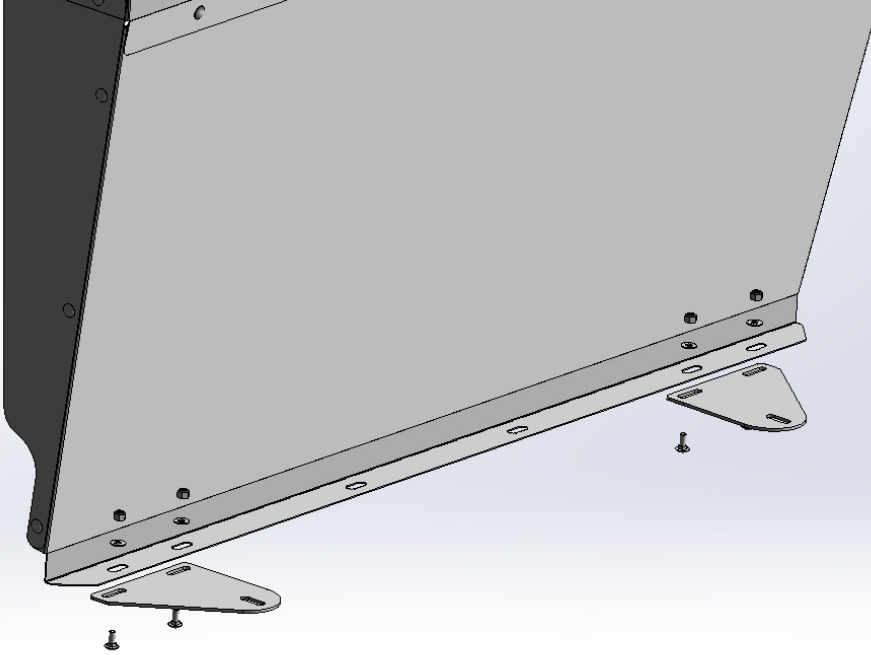
**Step 1-All Models**

Bolt "Bottom Panel" to "Top Panel" using  $\frac{1}{4}$ "x  $\frac{1}{2}$ " Carriage bolts with flat washers and nylock nuts as shown. Then bolt the "upper Wing" and "Lower Wing" as shown, you can also bolt the "Side Bracket" (use  $\frac{1}{4}$ "x $\frac{5}{8}$ " Carriage bolts if using this) for extra support to attach to the "B" pillar on any model vehicle, shown at bottom. DO NOT FULLY TIGHTEN at this point.



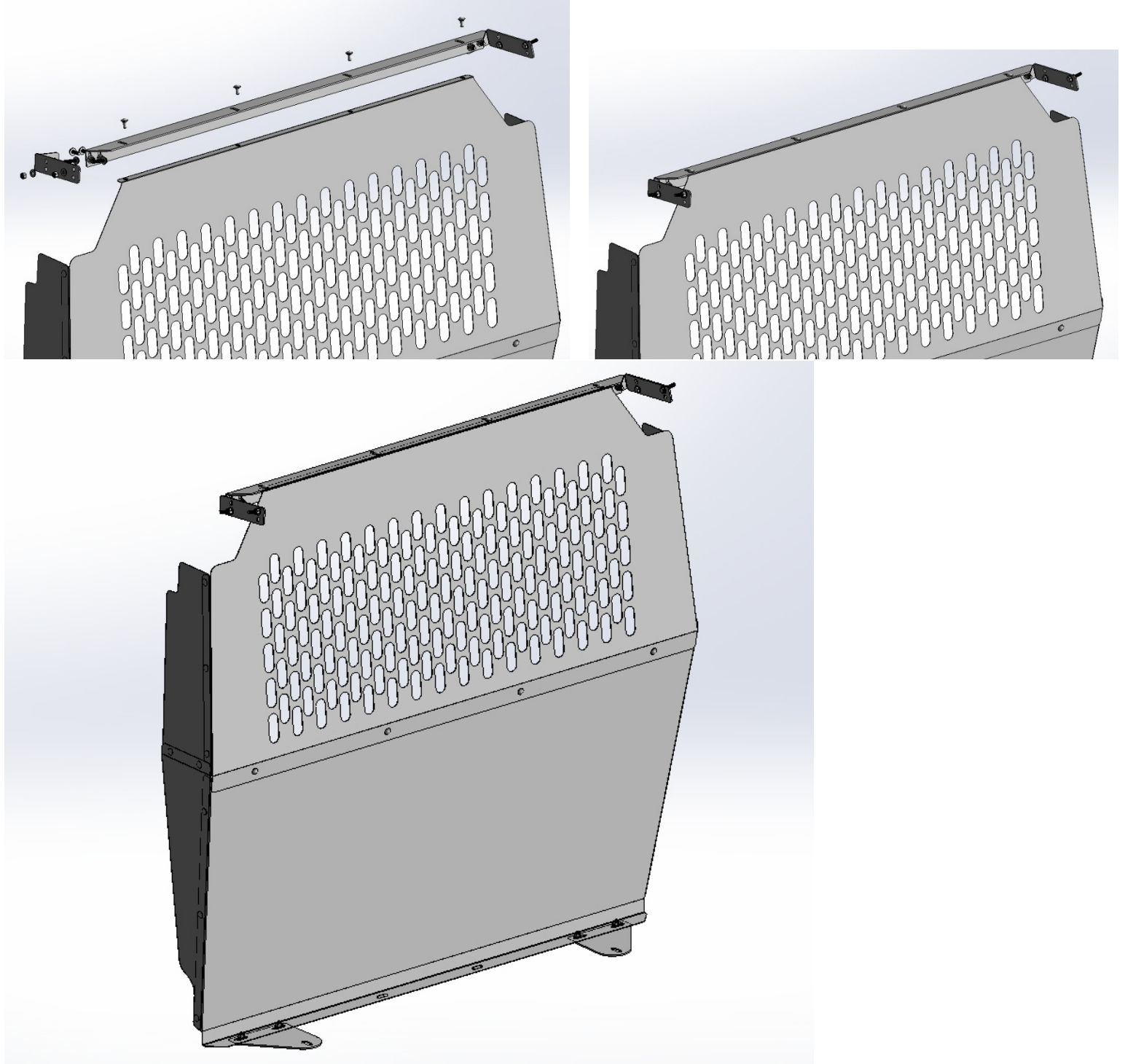
**Step 2-2014 and Newer Transit Connect-Skip This Step for NV 200, City Express & ProMaster City**

Bolt "Bottom Mount Plate" to the "Partition Assy." Using 5/16"x3/4" Carriage bolts with flat washers and nylock nuts from the bottom as shown so the head of the bolt is against the floor mat.



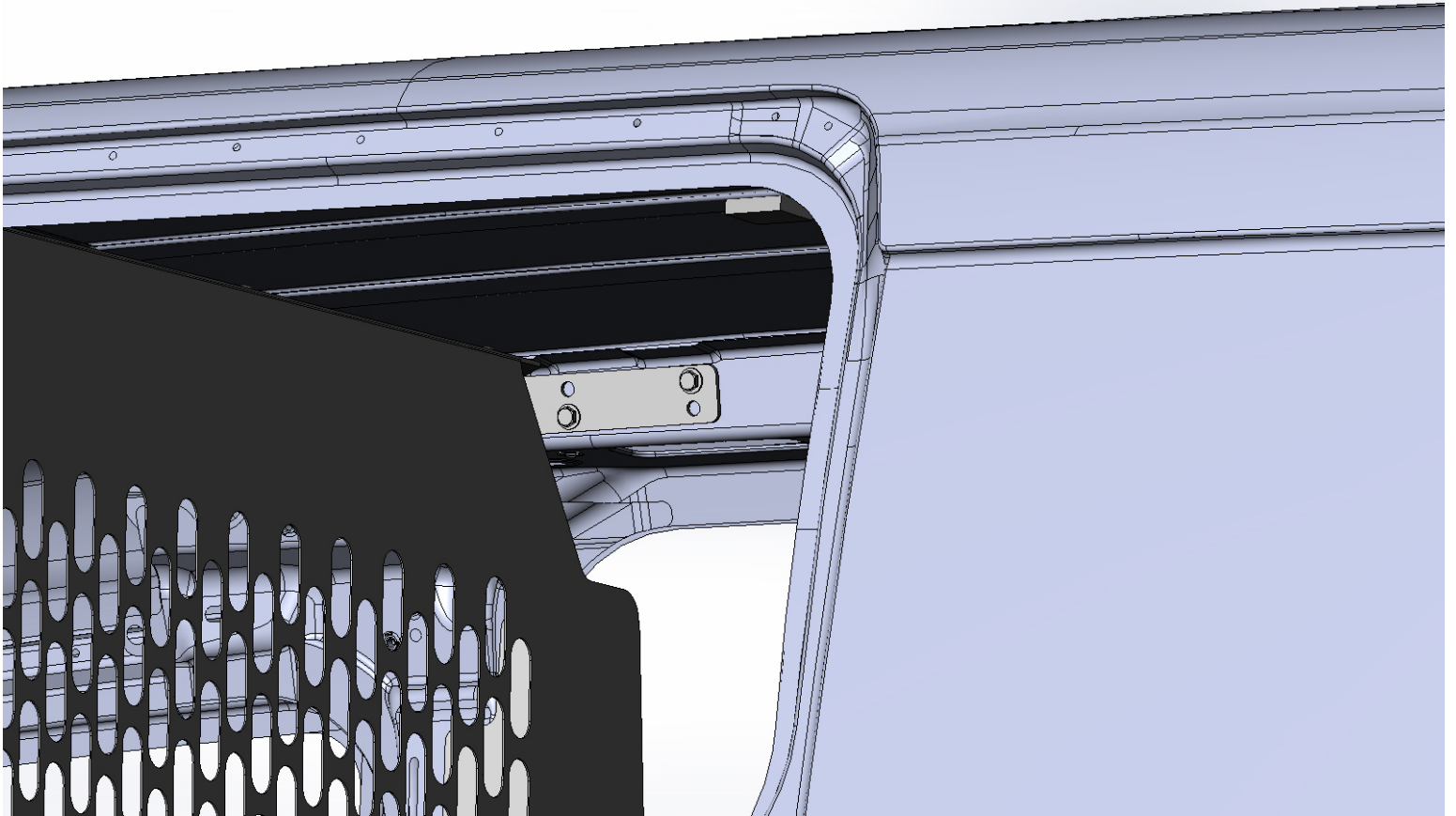
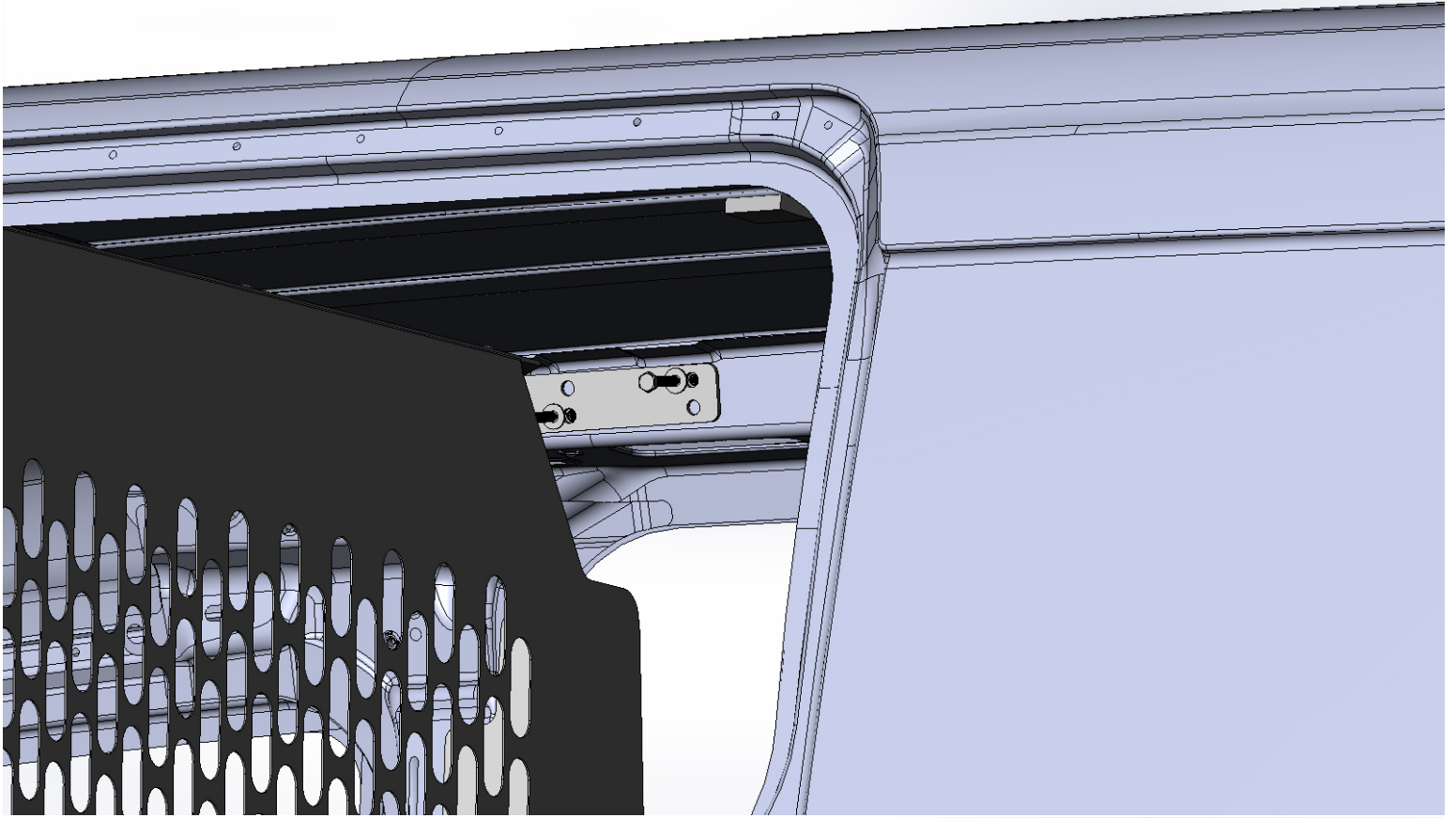
**Step 3-2014 and Newer Transit Connect (NV200/ProMaster City go to Step 3 NV200 or Step 3 ProMaster City)**

Bolt "Top Mounting Angle" to the top of the "Partition Assy." With the angle going down and to the front of the van, using  $\frac{1}{4}$ "x $\frac{5}{8}$ " Carriage bolts with flat washers and nylock nuts as shown. Now attach the "Upper Mount Brackets" pointing to the rear of the van using  $\frac{1}{4}$ "x $\frac{5}{8}$ " Carriage bolts with flat washer and nylock nuts as shown.



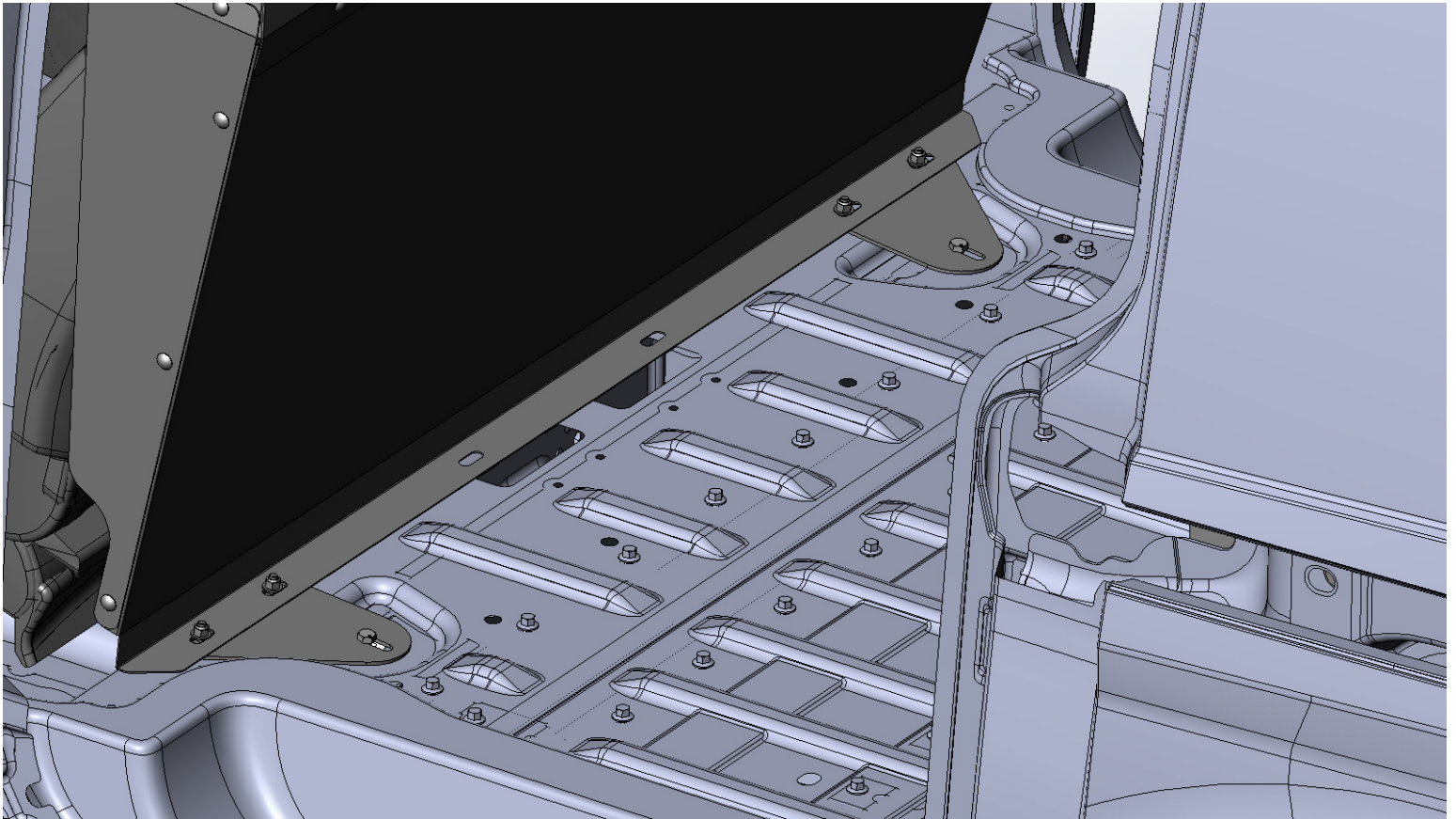
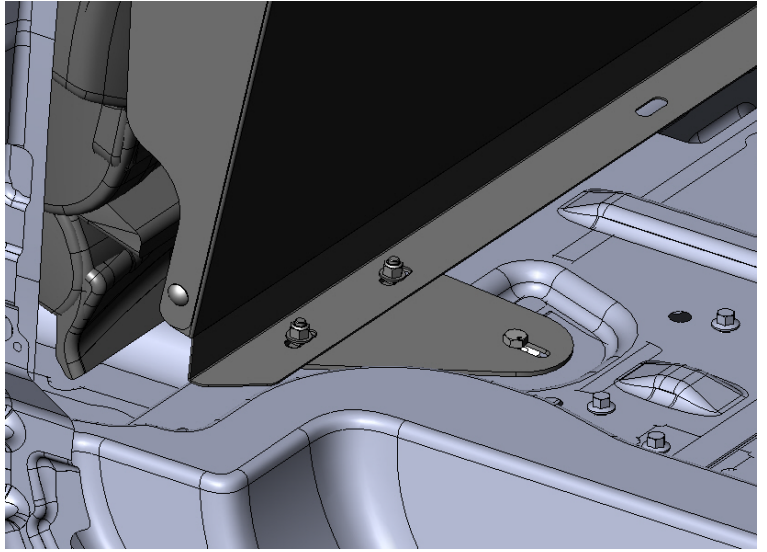
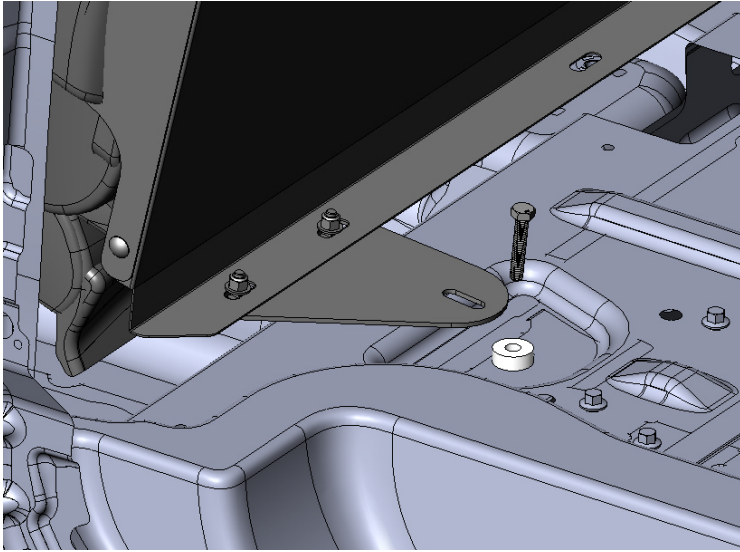
**Step 4-2014 and Newer Transit Connect**

Remove factory foam inserts from above sliding side door and factory “D” rings from the floor. Place Partition in the van and line up the “Upper Mounting Brackets” as shown. Use 5/16”x3/4” Self Tapping Screws in existing holes as shown.



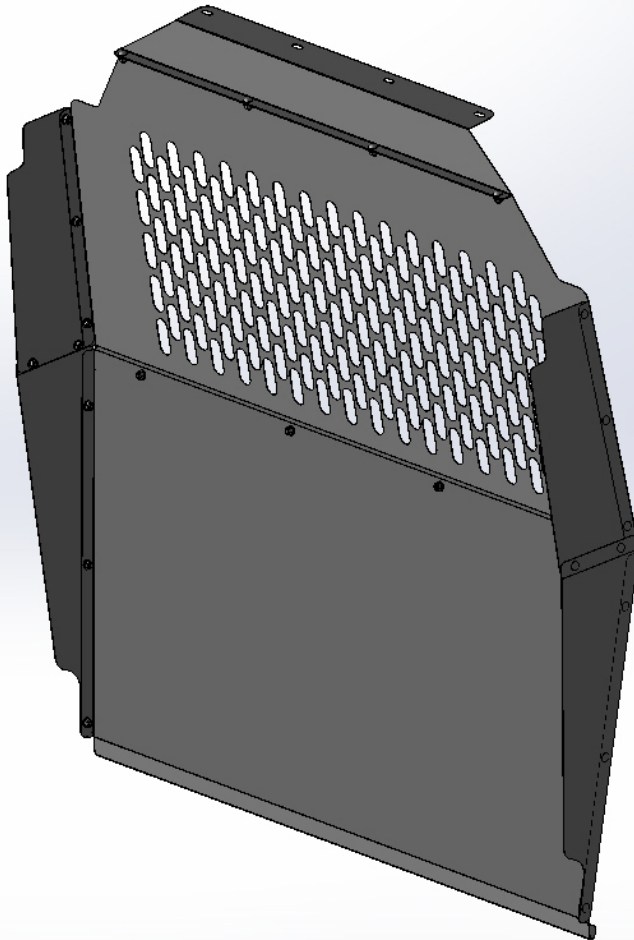
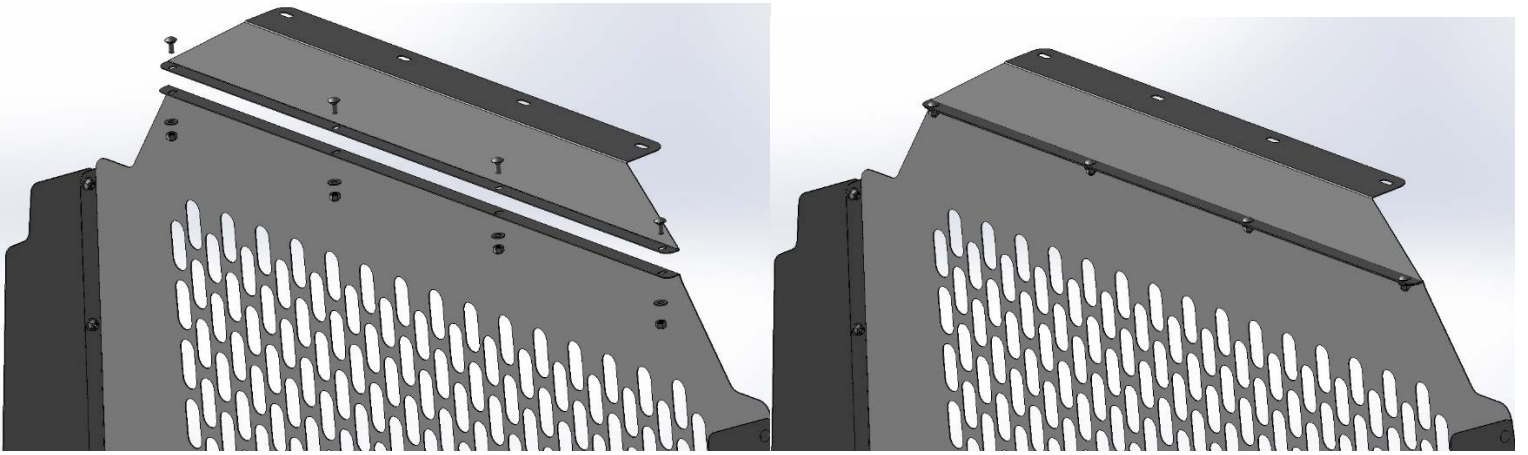
**Step 5-2014 and Newer Transit Connect**

Now put the 3/8" nylon spacer where the factory "D" ring was and slide the partition into place. Using the factory hardware, bolt the bottom of the partition assembly in place (bolt shown is for reference). You can now go through and tighten all the hardware. The installation is complete.



**Step 3 NV200/City Express**

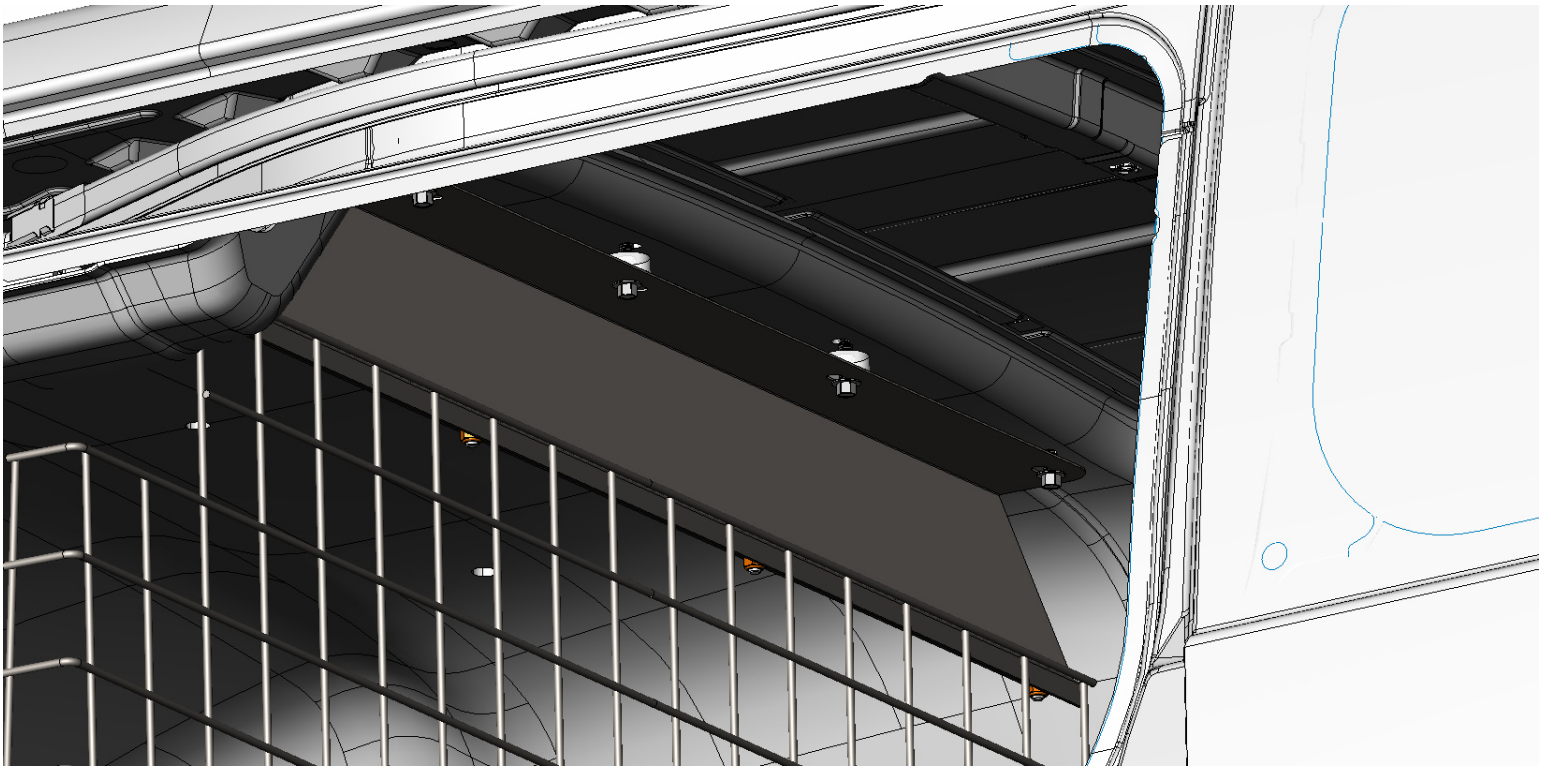
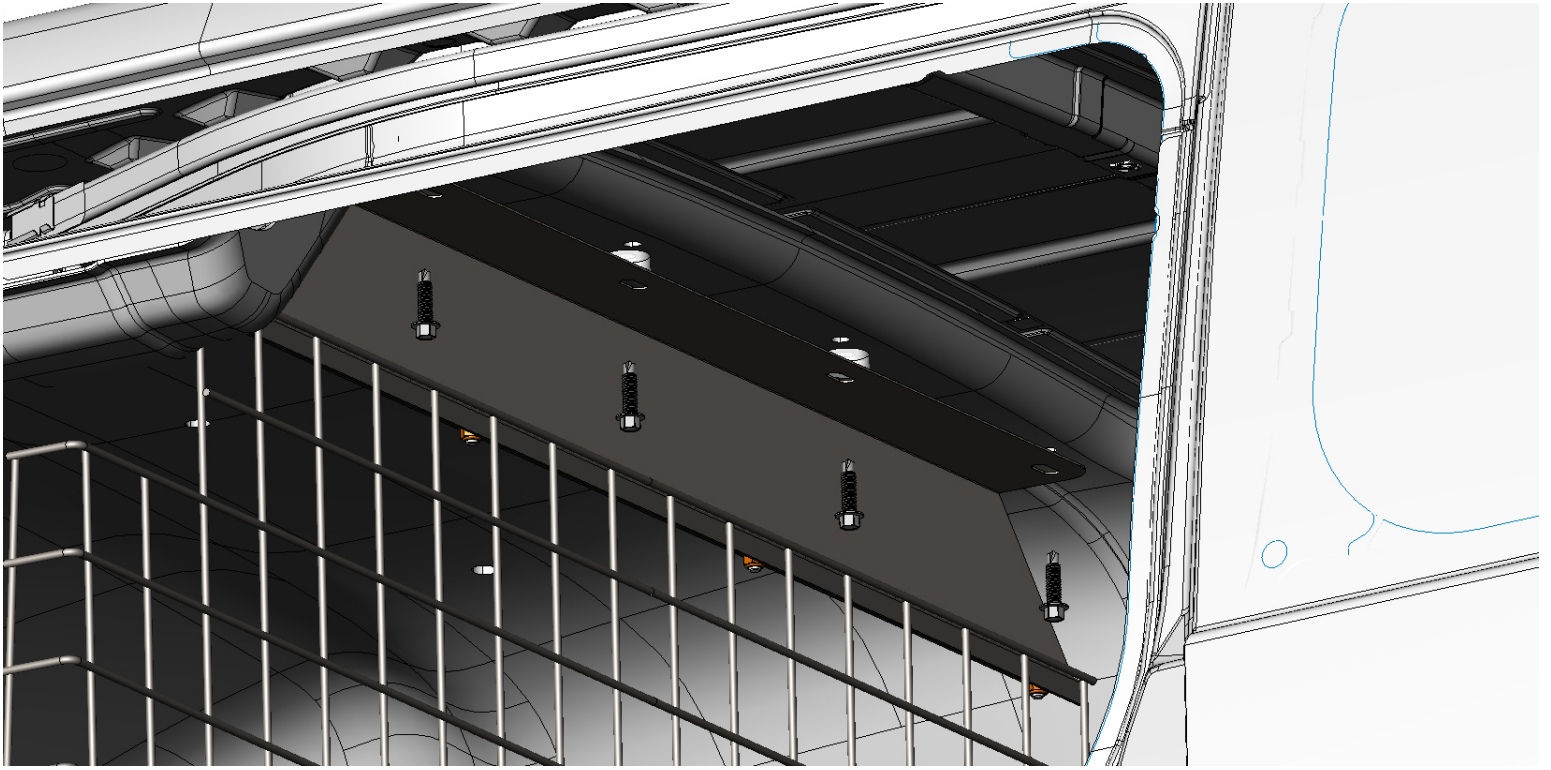
Attach "NV Top Mounting Panel" as shown using 1/4"x5/8" Carriage bolts with flat washers and nylock nuts as shown.





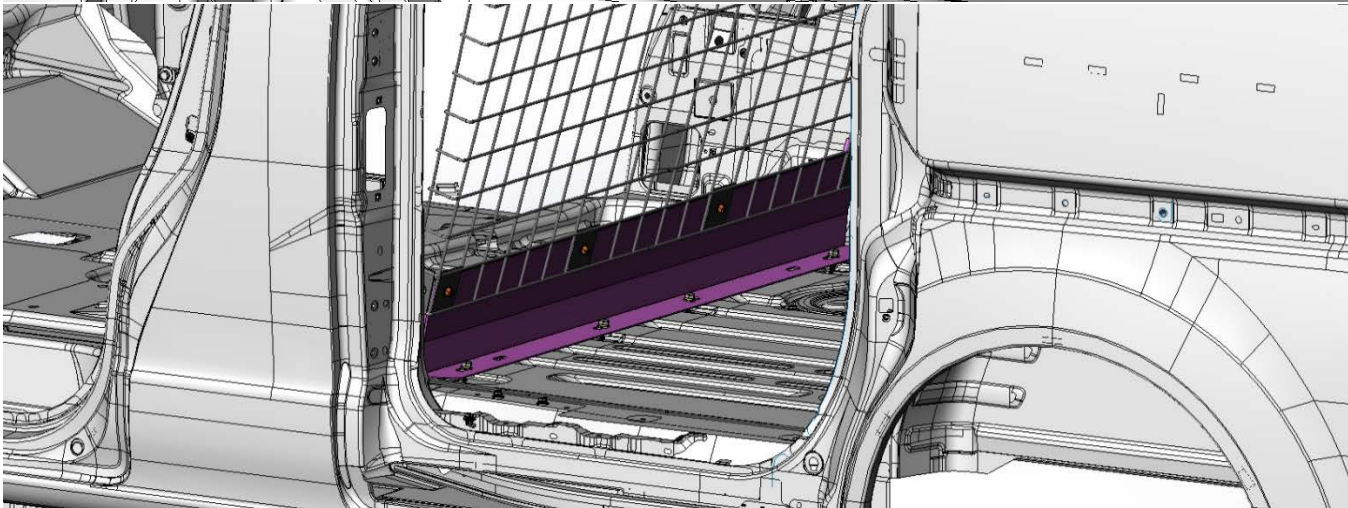
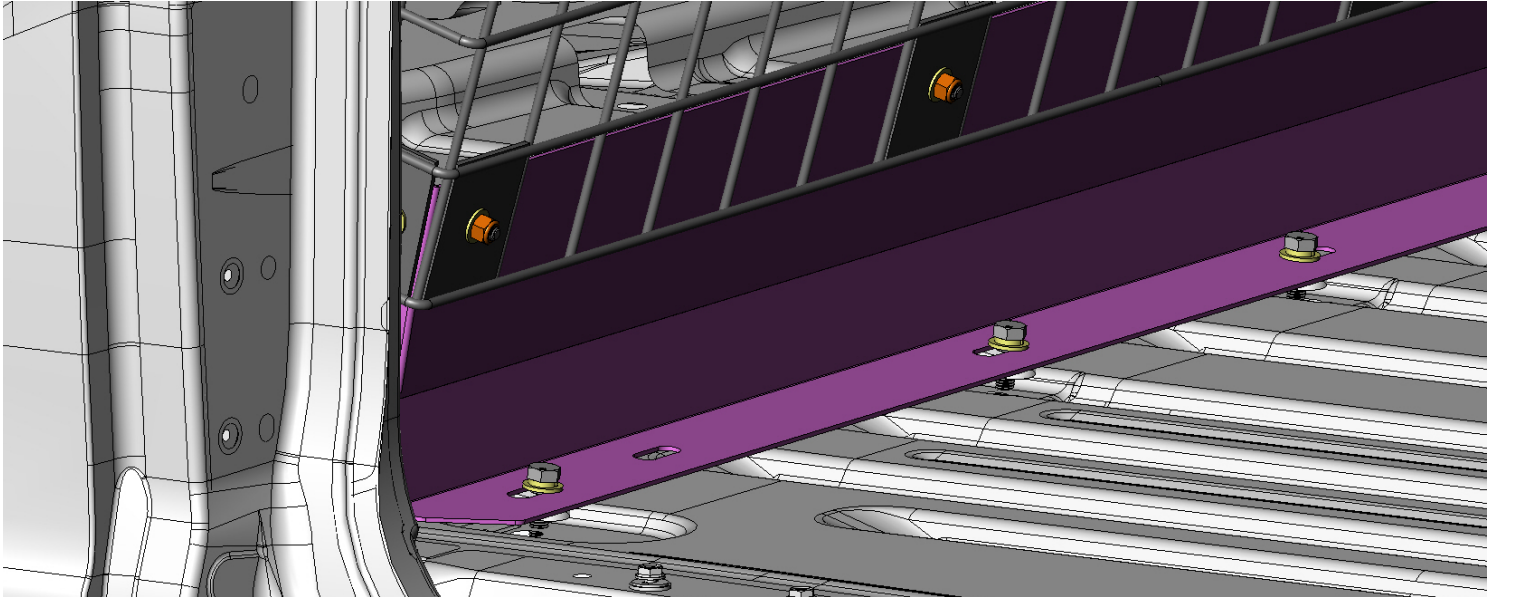
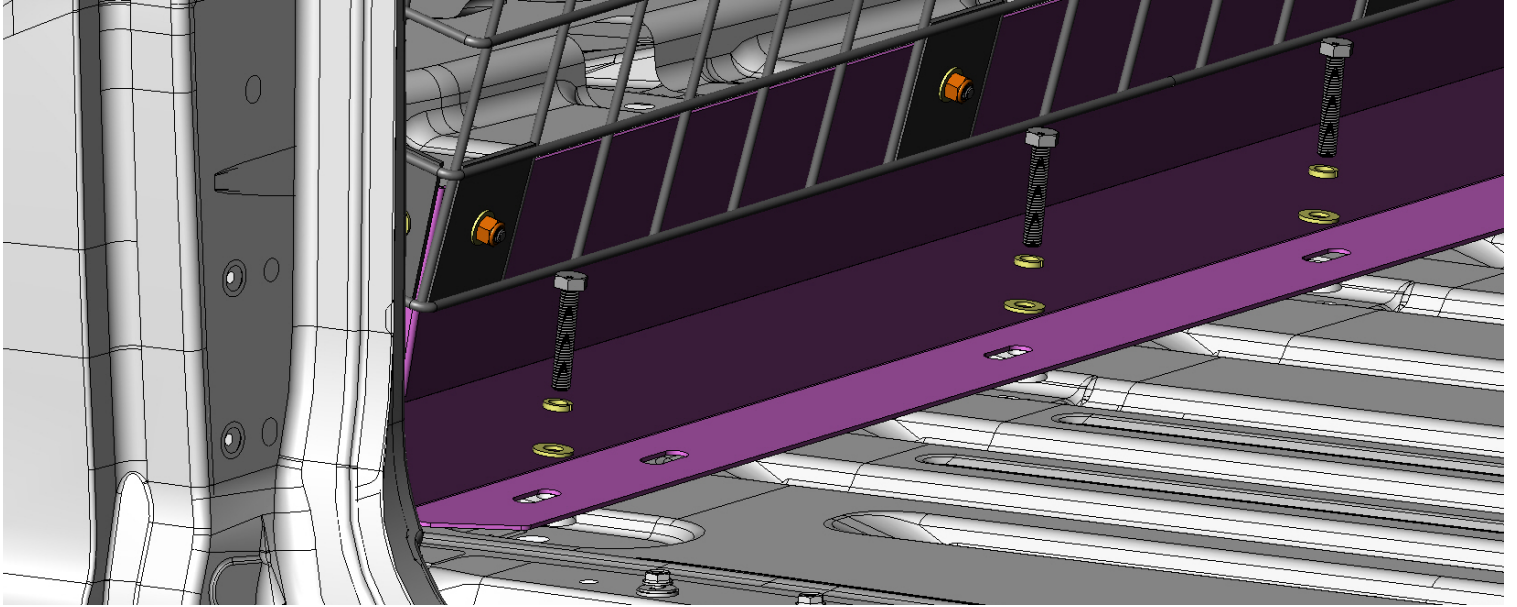
**Step 4 NV200/City Express (Shown With Wire Partition For Reference-THE STEPS ARE THE SAME WITH WIRE OR SOLID )**

Remove rear headliner fasteners and factory "D" rings. Place Partition Assembly in van, line up the "Top Mount Panel" with the holes in the headliner where you removed the fasteners. Loosely insert a 5/16"x1 1/4" self tapping screw in one of the side holes. Use the nylon spacers for the center 2 holes between the "Top Mount Panel" and the headliner (you can put them under the headliner for a better appearance) and start the other 3 5/16"x1 1/4" self tapping screws. DO NOT TIGHTEN fully until you get the bottom bolts started.



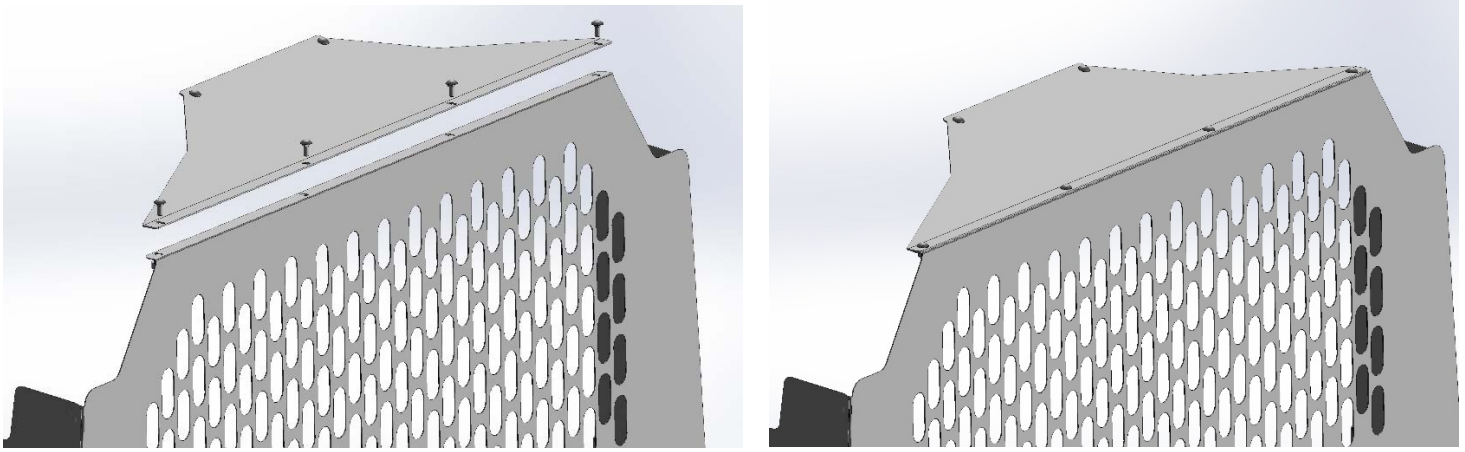
**Step 5 NV200/City Express**

Line up the "Bottom Mount Panel" with the outer holes that you removed the "D" rings from, this will tell you where the center ones are located. Cut holes in the mat to expose the center 2 mounting holes and remove the factory hardware. Place the nylon spacers under the "Partition Assembly" and install the 4 M8x45MM bolts. You can now tighten the top first, and then the bottom. The installation is complete.



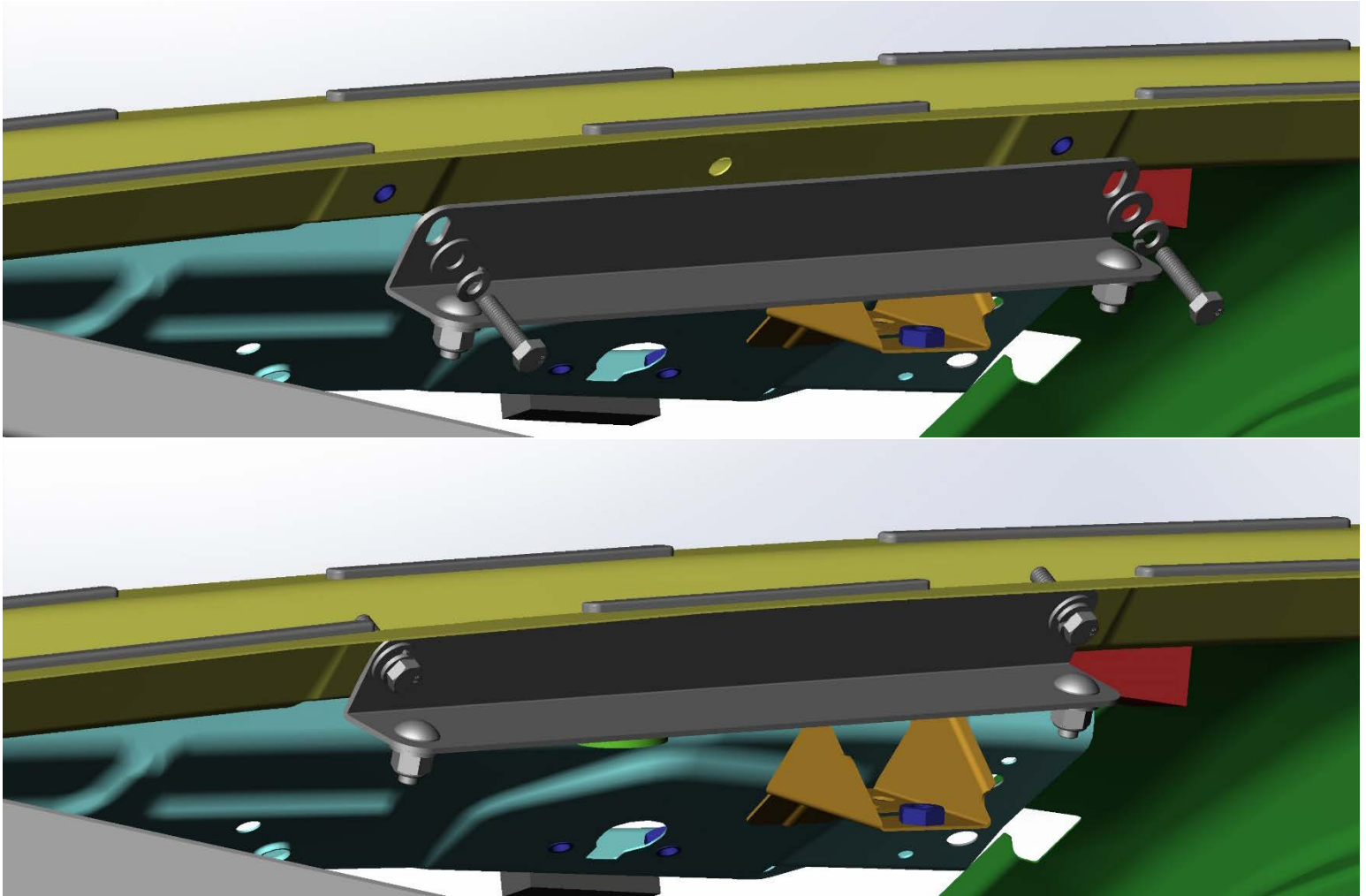
### **Step 3 ProMaster City**

Attach the "Top PC Panel" as shown using ¼"x ½" Carriage bolts with flat washers and nylock nuts.



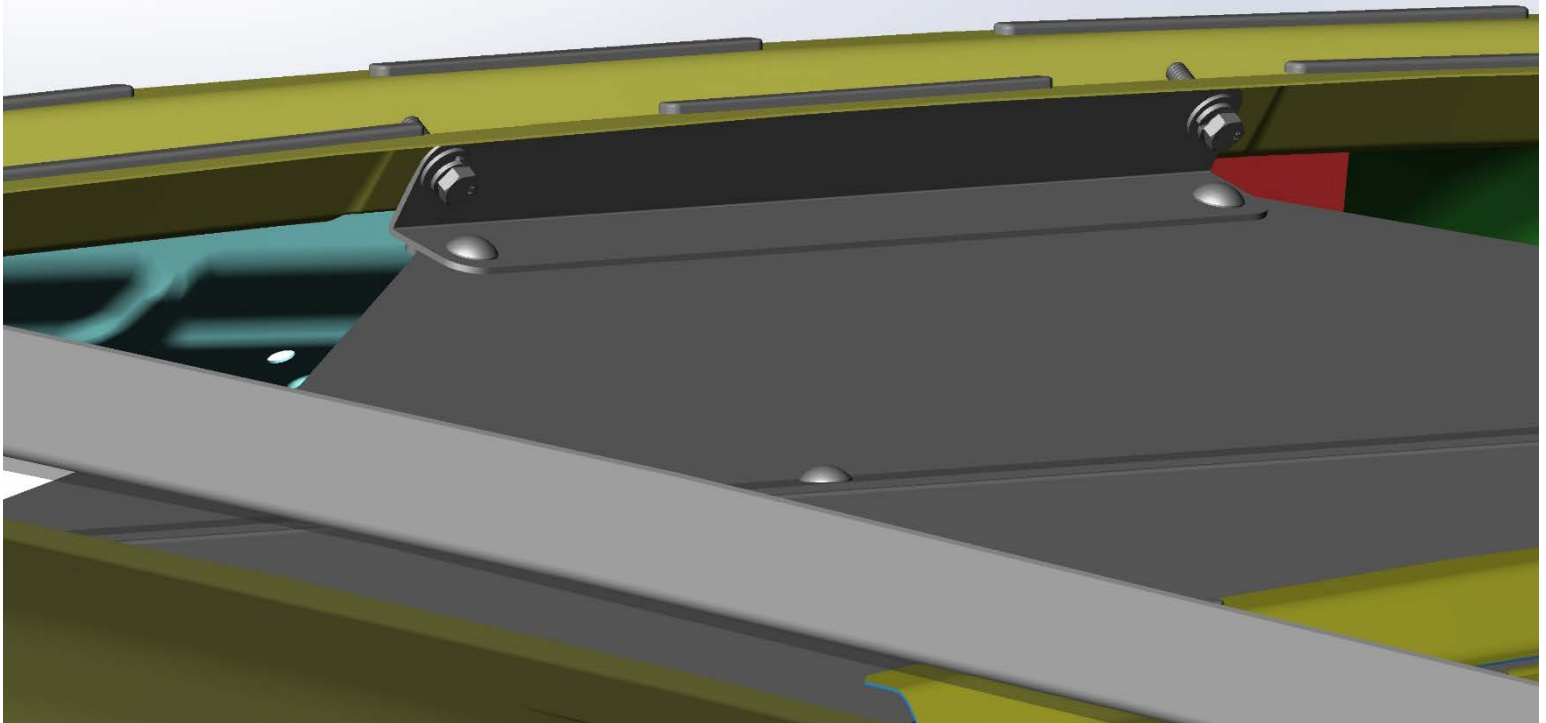
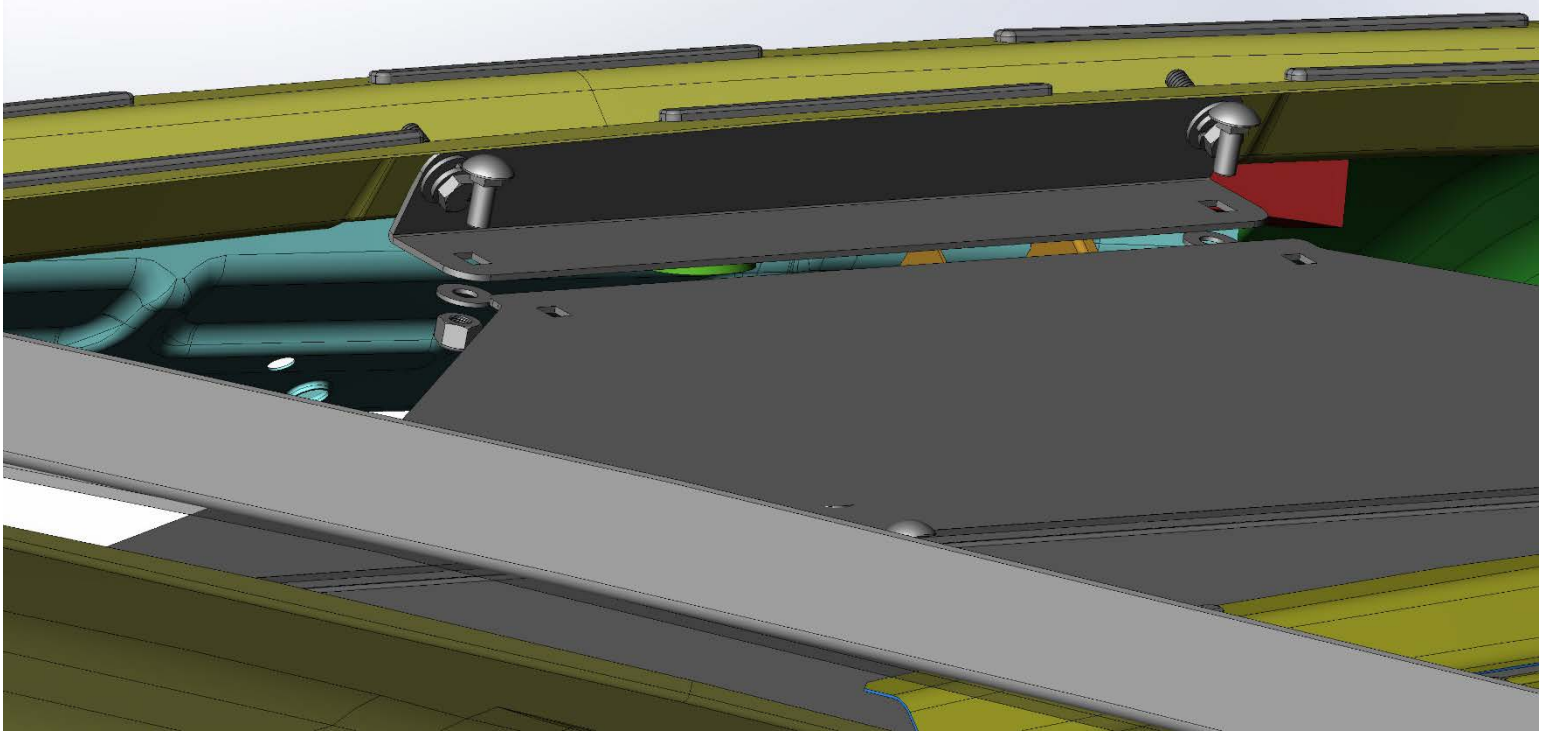
### **Step 4 ProMaster City**

Attach the "Top PC Pillar Mount" using M6x25MM bolts with lock washers and flat washer as shown. The roof is cut away for clarity.



**Step 5 ProMaster City**

Remove the front factory “D” rings and set “40670 “ assembly into place and attach the “Top PC Panel” to the “Top PC Pillar Mount” as shown using ¼” x 5/8” Carriage bolts with flat washers and nylock nuts as shown (bolts may go the other direction if preferred).



**Step 6 ProMaster City**

Now align the bottom outer slots with the factory “D” ring holes and re-install the “D” rings as shown. You can now attach the “Side Brackets” for extra stiffness if desired. The ProMaster City has factory threaded holes behind the plastic. Be sure to tighten ALL the fasteners at this point, you are now done.

