

RUGGED. RELIABLE. REAL.

ET6K

FEATURES

- Low-cost, Low-weight, Crane Certification Exempt
- 2,000 LB Maximum Lifting Capacity
- 6,000 FT-LB Moment Rating
- Electric - Hydraulic Power
- Hydraulic Elevation
- Manual Boom Extension 6-10 FT
- Continuous Power Rotation
- High-Efficiency, Heavy-Duty Electric Planetary Winch
 - 26 ft/min at 0 LBS; 18 ft/min at 1,000 lbs
 - 12V Permanent Magnet Motor
 - Dual-Load Applied and Dynamic Braking System
 - High-Efficiency 3-stage planetary geartrain (216:1)
- Meets ANSI B30.5 Safety Standards
- Meets OSHA 1910.180 Requirements

LIFTING CAPACITIES

REACH (FT.)	CAPACITY (LBS.)
3	2,000
6	1,000
10.4	576

STANDARD EQUIPMENT

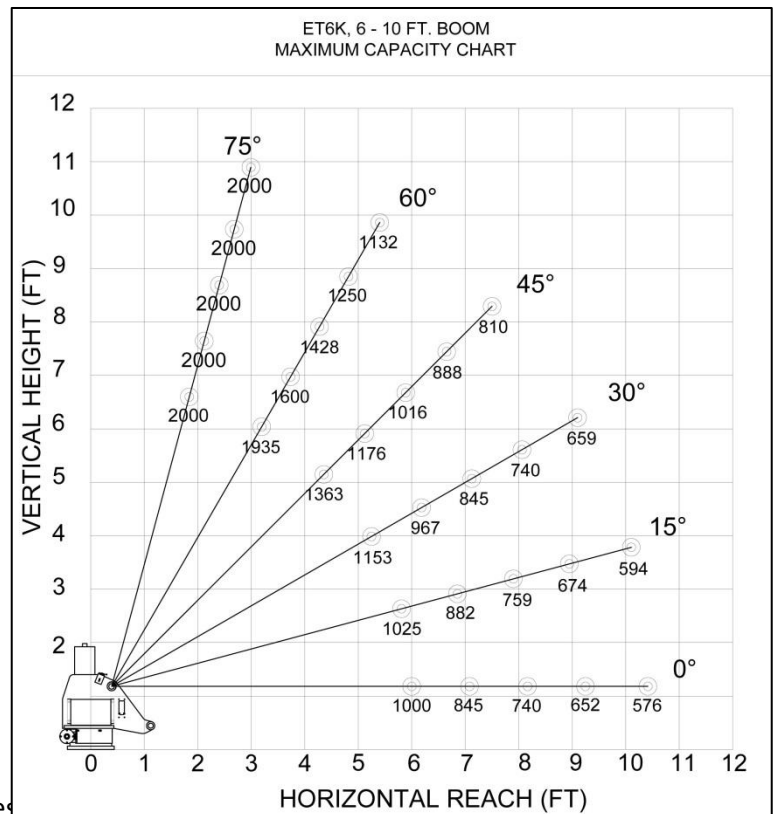
- Anti-Two Blocking Kit
- Capacity Overload Shut-Off System
- 50 FT of 3/16" Aircraft-Quality Wire Rope
- Remote Control Pendant: 20 FT Cord and Quick Disconnect
- Load Block with Swivel Hook Safety Latch
- Master Disconnect Switch
- Battery Cable: 25 FT, 4-Gauge

MINIMUM REQUIREMENTS

- 8,000 LB GVWR Chassis
- Outriggers
- Electric Power Source: 12V DC

OPTIONAL EQUIPMENT

- Radio Remote Controls
- Electric/Hydraulic and Manual Outrigger Packages
- Mounting Pedestal for Platform Bodies
- Boom Rests
- Cable overhaul weight



12110 Best Place | Cincinnati, Ohio 45241 | 800-226-2238 | 513-772-8446

info@venturo.com | www.venturo.com

