



RUGGED. RELIABLE. REAL.

ET30KX

FEATURES

- 5,000 LB Maximum Lifting Capacity
- 30,000 FT-LB Moment Rating
- Electric - Hydraulic Power
- Hexagonal Boom Construction
- 10' – 20' Boom (6' powered, 4' manual extension)
- Continuous Power Rotation
- High-Efficiency Planetary Winch
- Load-holding counterbalance on all cylinders
- Meets ANSI B30.5 Safety Standards
- Meets OSHA 1910.180 Requirements

LIFTING CAPACITIES	
REACH (FT.)	CAPACITY (LBS.)
6	5,000
10	3,000
16	1,875
20	1,500

STANDARD EQUIPMENT

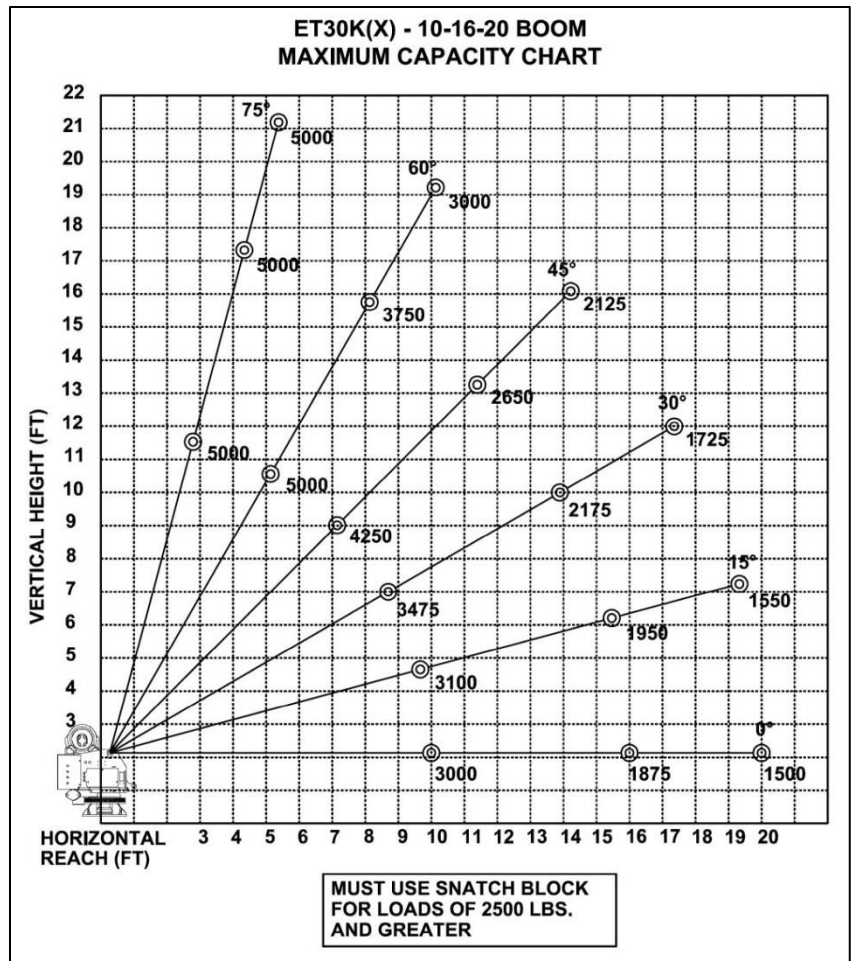
- Capacity Overload Shut-Off System
- Anti-Two-Blocking System
- 80 FT of 5/16" Aircraft-Quality Wire Rope
- Remote Control Pendant: 25 FT Cord and Quick Disconnect
- Load Block with Swivel Hook Safety Latch
- Master Disconnect Switch
- Battery Cable: 25 FT

MINIMUM REQUIREMENTS

- 11,000 LB GVWR Chassis
- Outriggers: Rear
- Electric Power Source: 12V DC

OPTIONAL EQUIPMENT

- Radio Remote Controls
- Electric/Hydraulic and Manual Outrigger Packages
- Mounting Pedestal for Platform Bodies
- Boom Rests



12110 Best Place | Cincinnati, Ohio 45241 | 800-226-2238 | 513-772-8446

info@venturo.com | www.venturo.com

