

# INSTALLATION SHEET

## RUGGED LINER

### REAR INNER WHEEL WELL LINERS

#### 17-21 FORD F250/350



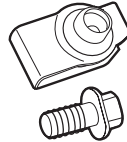
Driver Side Wheel Well (A)

#### LIST OF CONTENTS:

- (A) 1 - Driver Side Wheel Well
- (B) 1 - Passenger Side Wheel Well

#### LIK61 KIT:

- (C) 4 - J-Clips
- (D) 4 - Screws



Passenger Side Wheel Well (B)

AND

#### 15-20 FORD F150



Driver Side Wheel Well (A)

#### LIST OF CONTENTS:

- (A) 1 - Driver Side Wheel Well
- (B) 1 - Passenger Side Wheel Well

#### LIK61 KIT:

- (C) 4 - J-Clips
- (D) 4 - Screws



Passenger Side Wheel Well (B)

#### MISSING PARTS???

Call Rugged Liner at

**800-433-3604**

Any required parts will be shipped to you directly.

(DO NOT return whole kit to store)

#### TOOLS REQUIRED:

- Ratchet using 10mm socket in steps 3, 4 & 7.

**1**

**PLEASE READ INSTRUCTIONS CAREFULLY BEFORE STARTING THE INSTALLATION.**  
One person can perform the installation.



**2**

#### VEHICLE PREPARATION:

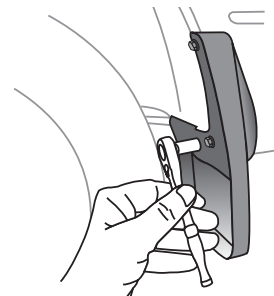
It is important that all areas where the wheel wells mount are clean and free of debris prior to installing.



**3**

#### For Trucks with Mud Flaps:

Remove mud flaps before installing wheel well liners. Then follow steps 4-8. Re-install mud flaps.



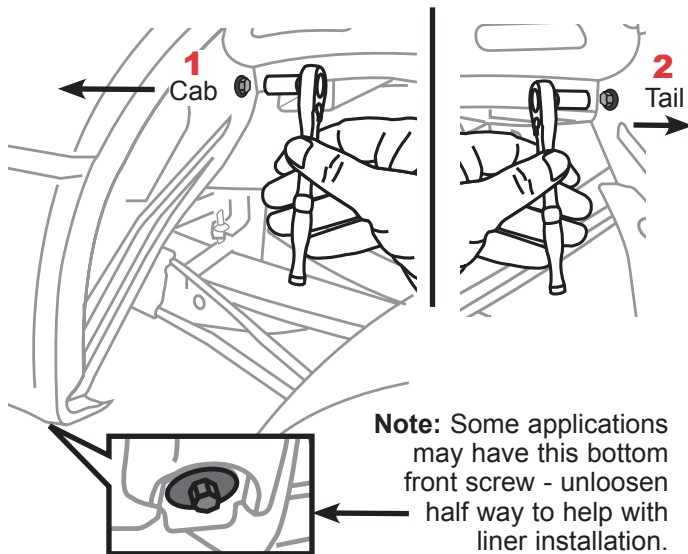
# INSTALLATION SHEET

## RUGGED LINER

### 17-21 FORD F250/350 & 15-20 FORD F150

- 4** Start on the driver side using a ratchet with 10mm socket to remove the fastener toward the cab end of the wheel housing **1**. Then remove the fastener toward the tail end of wheel housing **2**. **(Save the fasteners).**

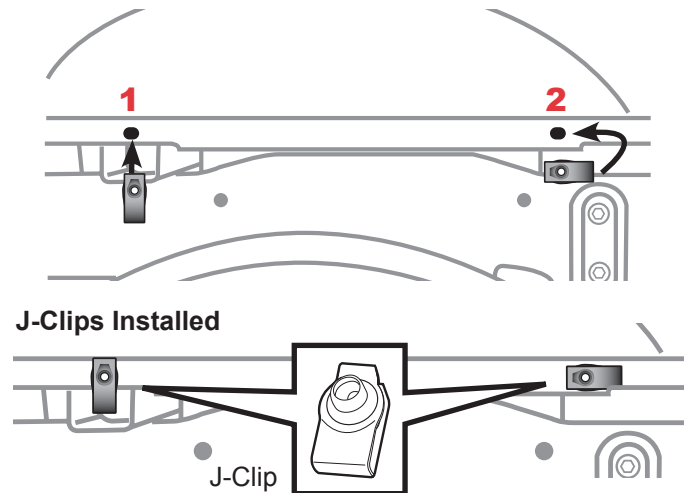
**Note:** Ford F150 application - No fastener toward cab to remove.



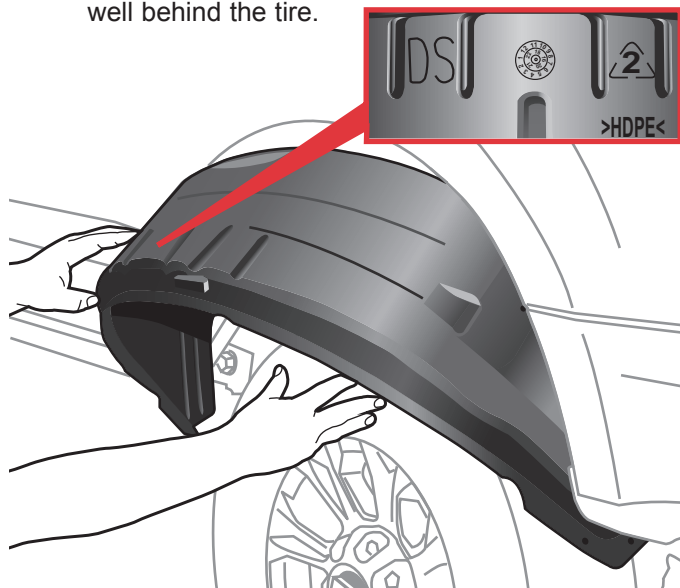
- 5** Locate the two holes at the back area of the wheel housing and insert one J-Clip (C) in each hole **1 & 2**.

**Note:** Due to some variations in Super Duty trucks - you might have to turn J-Clip (C) sideways and hold it behind the metal flange because of the return lip at bottom edge of wheel house flange near hole **2**.

**Shows Orientation of J-Clips Facing Cab**

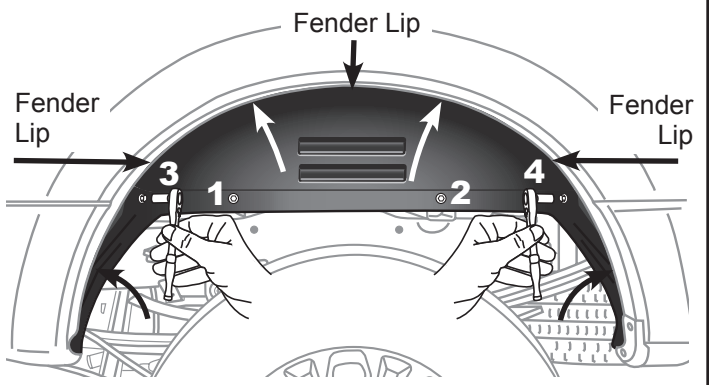


- 6** Start on the driver side by setting the driver side wheel well (A) marked as (DS) inside the inner panel of the truck's wheel well behind the tire.



- 7** Tuck the bottom sides of the lower part of the wheel well liner behind the metal lip of truck's fender and then tuck the upper part. Then install two screws (D) provided in places **1 & 2** using a ratchet with 10mm socket. After that re-install the two fasteners saved in step 4 in places **3 & 4**.

**Note:** Ford F150 application - No fastener toward cab to replace.



- 8** Repeat steps 3-7 on the passenger side when installing the passenger side wheel well (B).