

INSTALLATION SHEET

RUGGED LINER

REAR INNER WHEEL WELL LINERS 14-19 CLASSIC CHEVY & GMC 1500/2500/3500



Driver Side Wheel Well (A)

LIST OF CONTENTS:

- (A) 1 - Driver Side Wheel Well
- (B) 1 - Passenger Side Wheel Well

LIK52 KIT:

- (C) 14 - Big Christmas Tree Fasteners
- (D) 2 - Small Christmas Tree Fasteners



Passenger Side Wheel Well (B)

MISSING PARTS???

Call Rugged Liner at

800-433-3604

Any required parts will be shipped to you directly.

(DO NOT return whole kit to store)

TOOLS REQUIRED:

- T-10 Torx bit / driver in steps 3 & 10.

1

PLEASE READ INSTRUCTIONS CAREFULLY BEFORE STARTING THE INSTALLATION.

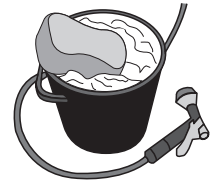
One person can perform the installation.



2

VEHICLE PREPARATION:

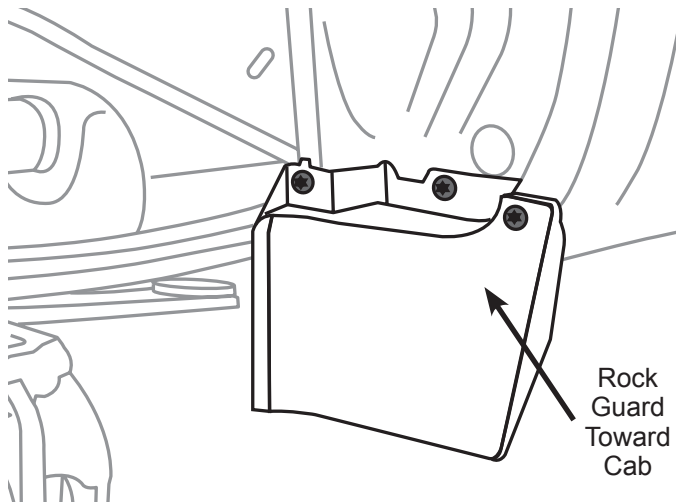
It is important that all areas where the wheel wells mount are clean and free of debris prior to installing.



3

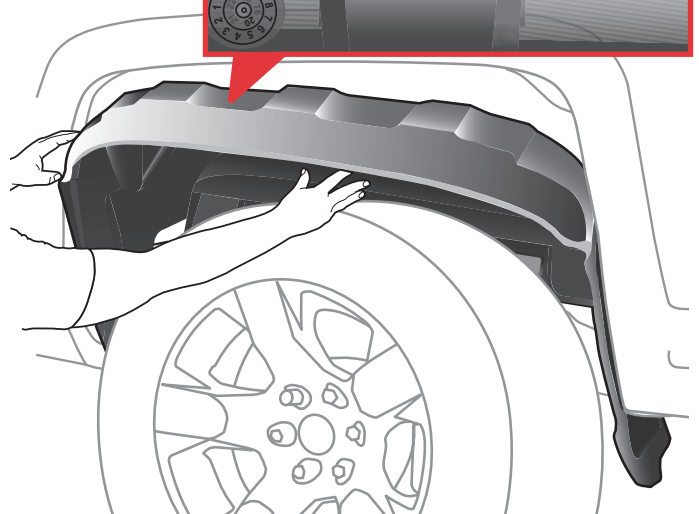
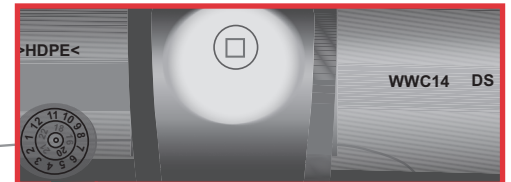
Note: If your truck model came without rock guards and fasteners please skip to step 4.

Note: If your truck model came with rock guards, remove (3) factory fasteners using a T-10 Torx bit / driver holding the factory rock guard in place. **(Keep all factory fasteners).**



4

Start on the driver side by setting the driver side wheel well (A) marked as (DS) inside the inner panel of the truck's wheel well behind the tire.

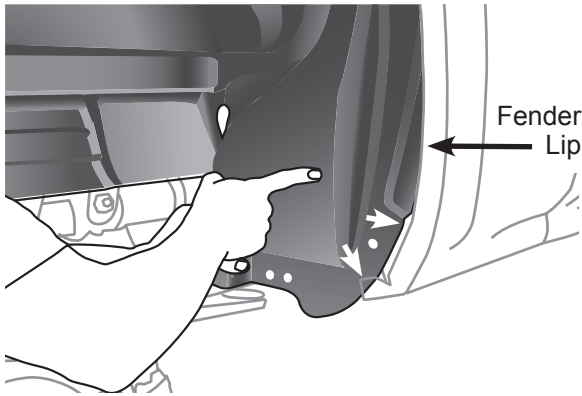


INSTALLATION SHEET

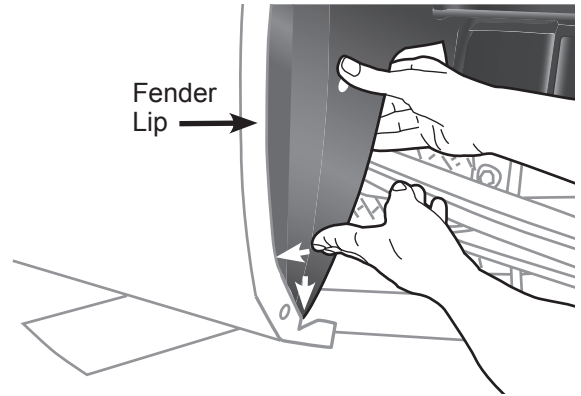
RUGGED LINER

14-19 CLASSIC CHEVY & GMC 1500/2500/3500

- 5** Tuck the lower cab part of the wheel well liner behind the metal lip of truck's fender.

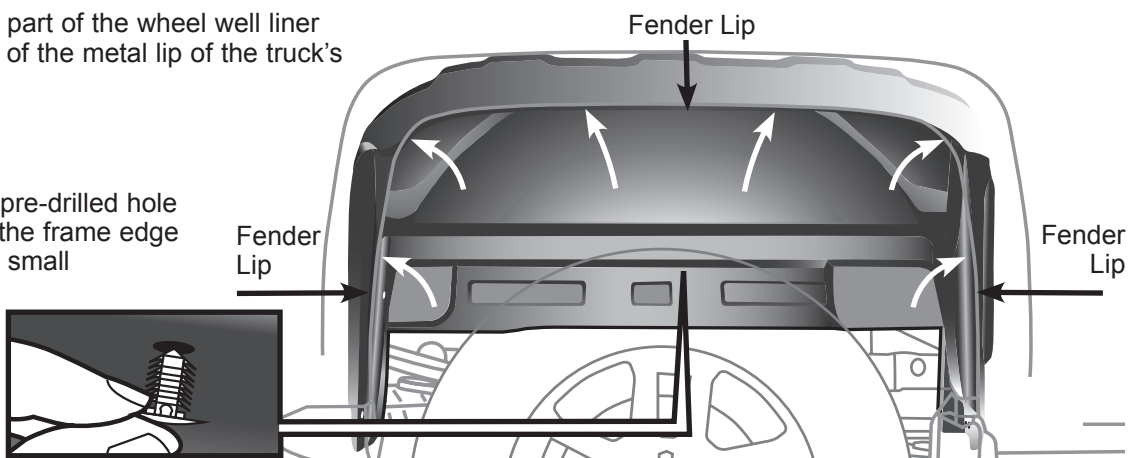


- 6** Tuck the lower tail part of the wheel well liner behind the metal lip of truck's fender.



- 7** Tuck the upper part of the wheel well liner behind the rest of the metal lip of the truck's fender.

- 8** Locate the (1) pre-drilled hole located below the frame edge and install one small Christmas tree fastener (D) provided.



- 9** **Note: For trucks without factory rock guards** Locate pre-drilled hole 6 at the bottom inside corner of the wheel well liner and install one big Christmas tree fastener (C) provided.

- 10** **Note: For trucks with factory rock guards** Re-install the rock guard using the (3) factory fasteners that you saved in step 3.

- 11** Locate the (5) pre-drilled holes in the wheel well liner to install big Christmas tree fastener (C) in each.

- 12** Repeat steps 3-11 on the passenger side when installing the passenger side wheel well (B).

